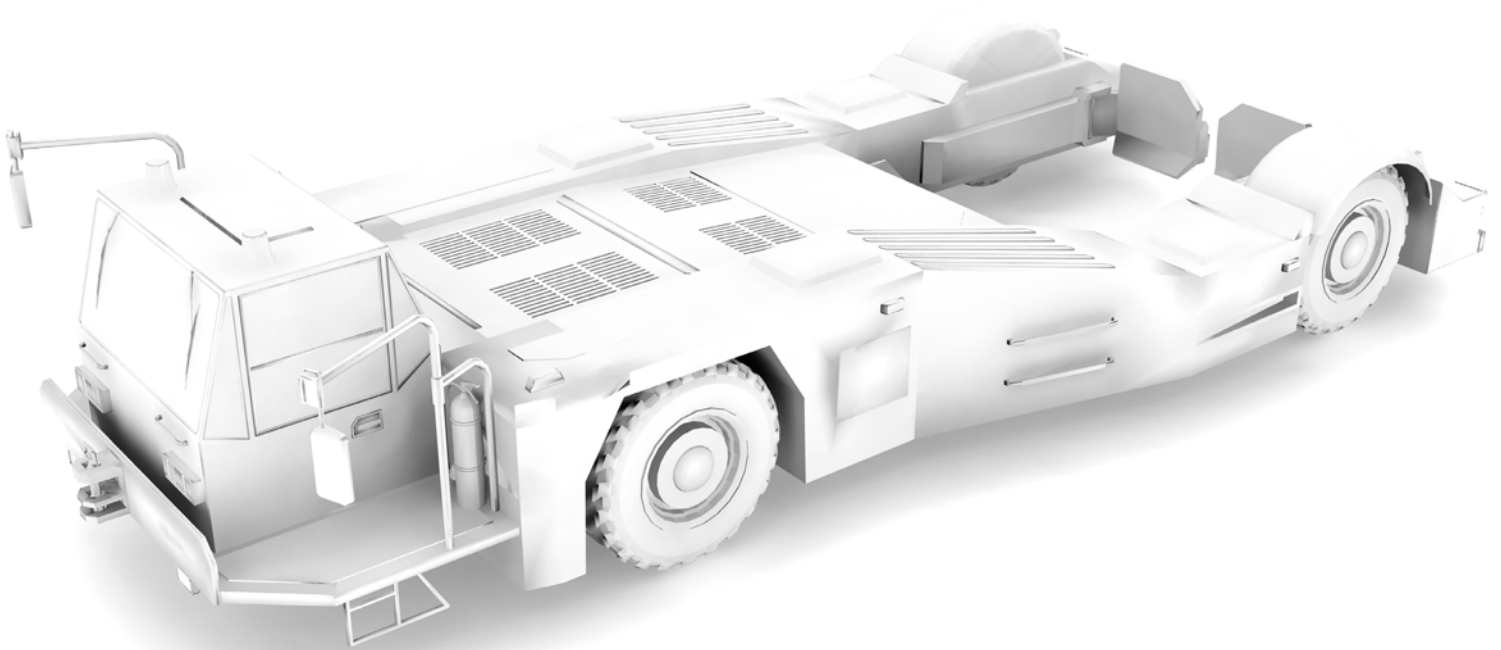




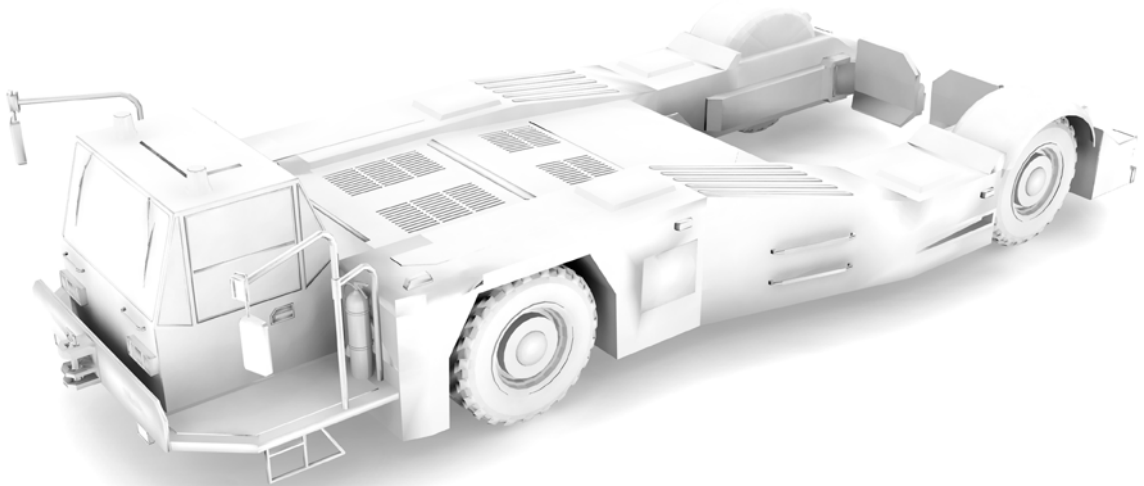
ROTAREX
FIRETEC



**COMPLETE FIRE SUPPRESSION SYSTEMS
FOR AIRPORT EQUIPMENT**

A COMPLETE DETECTION & SUPPRESSION SYSTEM PRE-ENGINEERED FOR AIRPORT VEHICLES

- ★ Automatically detects and extinguishes electrical and mechanical fires
- ★ Installs directly INSIDE the motor compartment, closer to where a fire would start
- ★ Protects passengers and valuable equipment
- ★ Easy / flexible installation
- ★ Quick & effective suppression
- ★ Highly dependable



DESIGNED FOR ALL AIRPORT VEHICLE AND TRANSPORT APPLICATIONS



FAST & EFFECTIVE

Rotarex FireDETEC® systems use a proprietary linear sensor tube that reliably detects a young fire and actuates release of the extinguishing agent using pneumatic technology. It is more flexible, space efficient and cost effective versus alternative mechanical or electronic systems.

1. Quick & Easy installation directly inside engine compartments:

The flexible sensor tubing and discharge subsystem are easily installed directly above and around the engine - closer to where a fire could start. The cylinder can be mounted anywhere outside the protection zone.

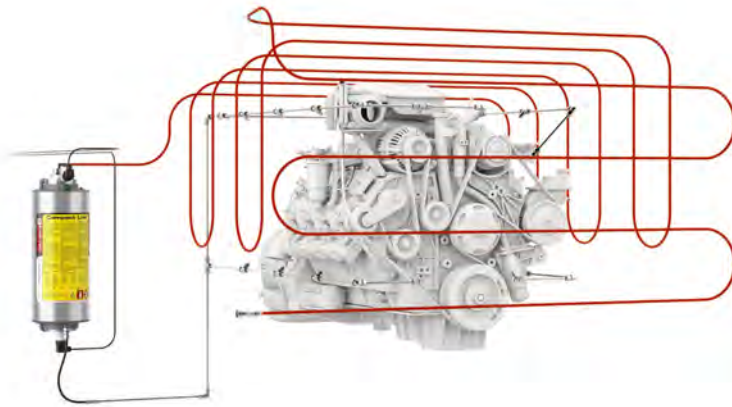
When in service, the sensor tubing is pressurized with dry nitrogen to 16 bar. The dynamics of pressurization make the tubing more reactive to heat.

2. Early fire detection:

If a fire occurs, the heat of the fire causes the pressurized sensor tube to burst at the hottest spot (approx. 110°C)

3. Instant suppression:

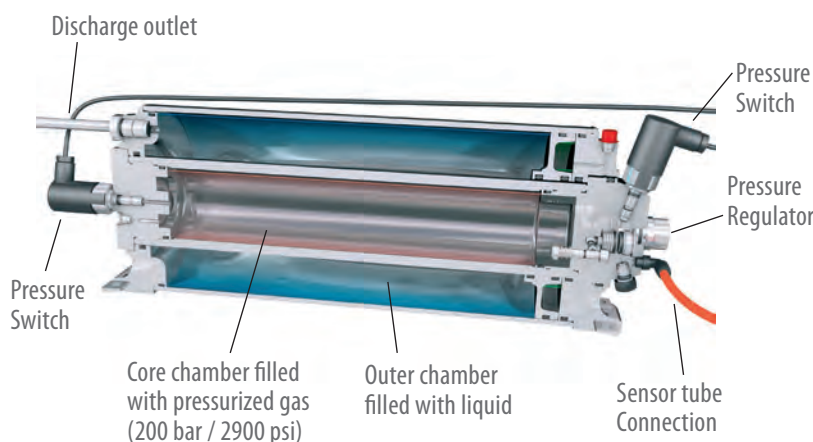
The sudden tube depressurization actuates the special pressure differential valve and instantly floods the entire engine compartment with FireDETEC® TS55 ea extinguishing agent. The fire is quickly suppressed just moments after it began... minimizing damage and downtime.



CRITICAL ZONES TO PROTECT: ENGINE, HYDRAULICS MOTORS

PATENTED DUAL CHAMBER CYLINDER

- ★ More robust to withstand vibrations
- ★ Allows vertical or horizontal mounting
- ★ Superior safety and leak protection



- Safer operation: the high pressure chamber is protected in the inner core
- When activated, the pressurized gas is released into the outer chamber forcing against a piston.
- The piston pushes the extinguishing liquid out through the discharge tube
- A built-in pressure regulator ensures a constant and sustained discharge to help prevent reignition

A MANUAL ACTUATOR CAN BE MOUNTED IN THE CABIN



WORLDWIDE HEADQUARTERS

24, rue de Diekirch,
L-7440 Lintgen
Luxembourg
Tel.: +352 32 78 32-1
Fax: +352 32 78 32-854
E-mail: firetec@rotarex.com



WORLDWIDE OFF-ROAD INSTALLATION REFERENCES

